



Reduce Loss.

Reduce Theft.

Reduce Downtime.



# > Introductions



Scott Austin  
Supply Chain & Logistics



Chuck Evanhoe  
President & CEO



Reduce Loss.

Reduce Theft.

Reduce Downtime.



ItemAware

## > Globally proven, region-ready



**Chuck Evanhoe**  
President & CEO



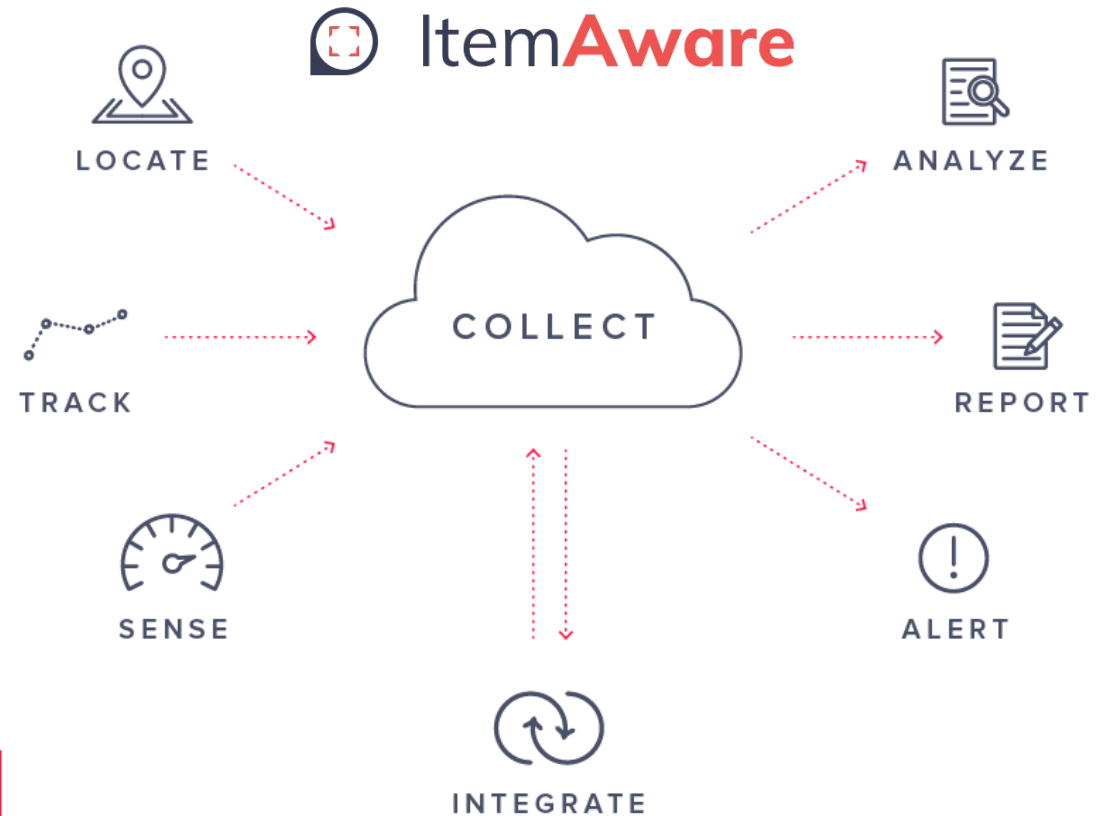
*ItemAware* will **save you time, money, recover 'lost sales'**, and scale to fit your specific business needs.

Locate, track and sense what matters to your business using RFID, barcodes, BLE, cellular GPS, and other automatic identification and data capture technologies.

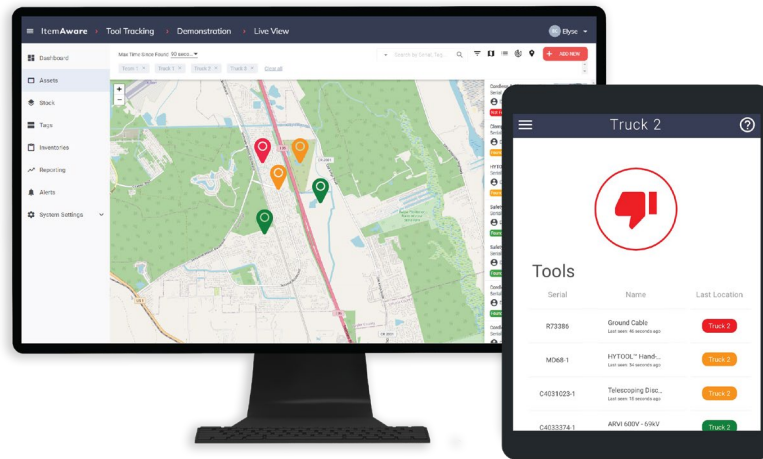
# > A Total Asset and Item Management Solution



- **Locate:** all items in real-time
- **Track:** item movement, history, & data
- **Sense:** when an item requires maintenance
- **Integrate:** with current systems
- **Analyse:** item data with analysis tools
- **Report:** based on item information selected
- **Alert:** with notifications based on your parameters



# Demonstration



ItemAware

# > Real-world examples at Scale



## Concurrent Electric

- Tracking tools on 57 bucket & digger trucks

### Commercial Benefits

- ✓ Tool Loss: Nearly 0
- ✓ Recovered \$175,000 in duplicate tools

## Pike Electric

- Tracking Tool locations and Utilisation

### Commercial Benefits

- ✓ Initial 30 units deployed as use case Test: Deployment goal across a 6000+ fleet
- ✓ Tool utilisation data captured Allowed for Fleet optimisation

## US Patent & Trade Mark Office\*

- Tracking 130,000+ IT assets, 6 states, 20+ buildings, 180 floors

### Commercial Benefits

- ✓ Error Costs: 54% reduction
- ✓ Loss Prevention Costs: 98% reduction
- ✓ ROI: 2.5 years
- ✓ Annual Savings: \$1.2M

\*Our team completed these projects under the 'Evanhoe' company name.

> Work Truck Productivity,  
Profitability & Safety



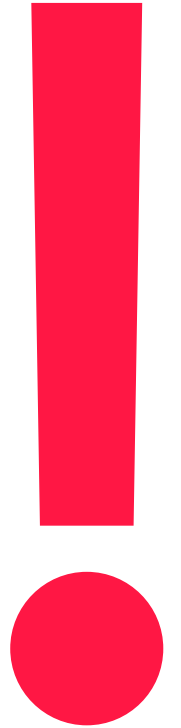
 Item**Aware**

# > Tool Loss is endemic across all industries.

The **Electrical Utility Industry** alone estimates:

- A 30% annual loss (and theft) rate!
- \$30,000 is the average value of tools per truck
- Approximately 100,000 heavy trucks

**\$900,000,000** estimated  
value of tools “Lost” annually





# > Common Use Cases

## Tool Loss Impacts

- Replacement costs
- Non-Compliance
- Safety hazards
- Poor productivity
- Unnecessary tool duplication

## Tool Utilisation

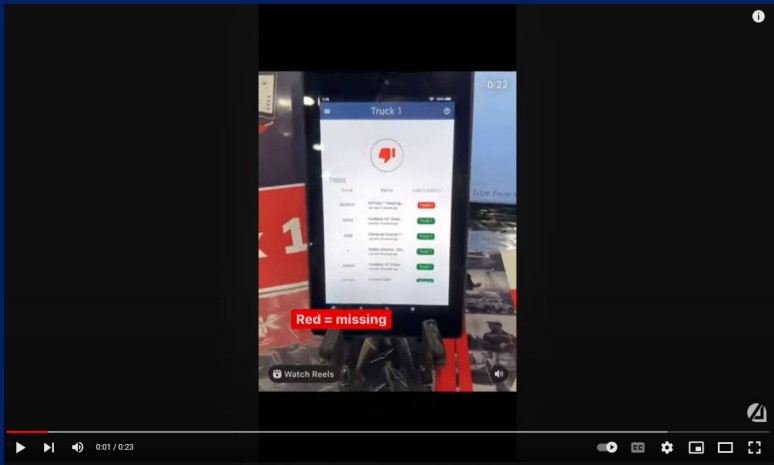
- Right sizing number of tools in fleet
- Increase project profitability
- Reduce overall spend
- More efficient purchasing

## Compliance & Safety

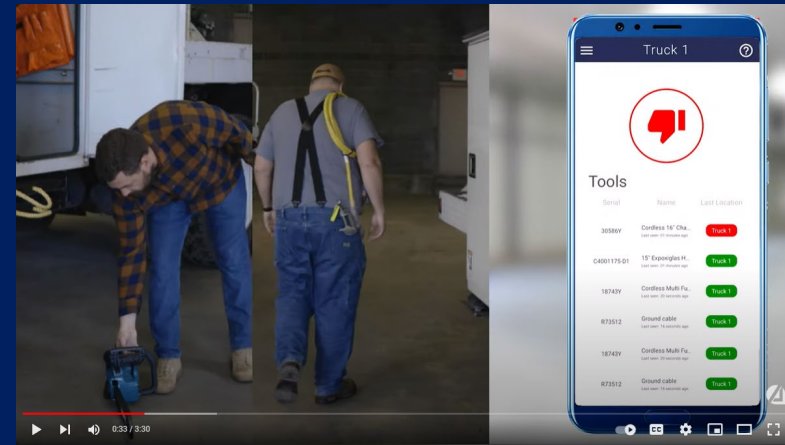
- Tracking dates for inspection/certification cumbersome
- Customized notification
- Minimizing OSHA interventions



# > You Tube Videos



[Play Video – quick version](#)



[Play Video – full version](#)



# > Questions



Scott Austin  
Supply Chain & Logistics



Chuck Evanhoe  
President & CEO



Reduce Loss.

Reduce Theft.

Reduce Downtime.



ItemAware